

Australian Water Recycling
Centre of Excellence



Australian Water Recycling Centre of Excellence
National Validation Framework
Priority Research Program Overview

Presented by

Cédric Robillot

NatVal2.2 Program Manager



Australian Government
Water for the Future



NatVal 2.2 – Priority Research Program

- NatVal Stage 1
 - Street Maps
 - Business Case and Cost-Benefit Analysis
- NatVal Stage 2
 - 2.1 Protocol Development Group
 - **2.2 Priority Research Program**



NatVal 2.2 Research Program

- 18-21 months - Administered by WaterRA
- Five subprojects
 - Subproject 1 - Membrane Bioreactors
 - Subproject 2 - Reverse Osmosis membranes
 - Subproject 3 - Activated sludge treatment
 - Subproject 4 - Multiple barriers (integrated systems)
 - Subproject 5 - Pathogen testing methods

Program Budget

Salaries	Operating costs	In-kind contribution	Total value
\$1,935,579	\$1,109,196	\$3,530,957	\$6,575,732



NatVal 2.2 Research Program

Universities / Research providers

CSIRO

Curtin University

Griffith University

National Measurement Institute

University of New South Wales

University of Queensland

Victoria University

WaterFutures

Utilities / Private sector

Koch Membrane Systems

Melbourne Water

SA Water

SouthEast Water

Sydney Water Corporation

WA Water Corporation



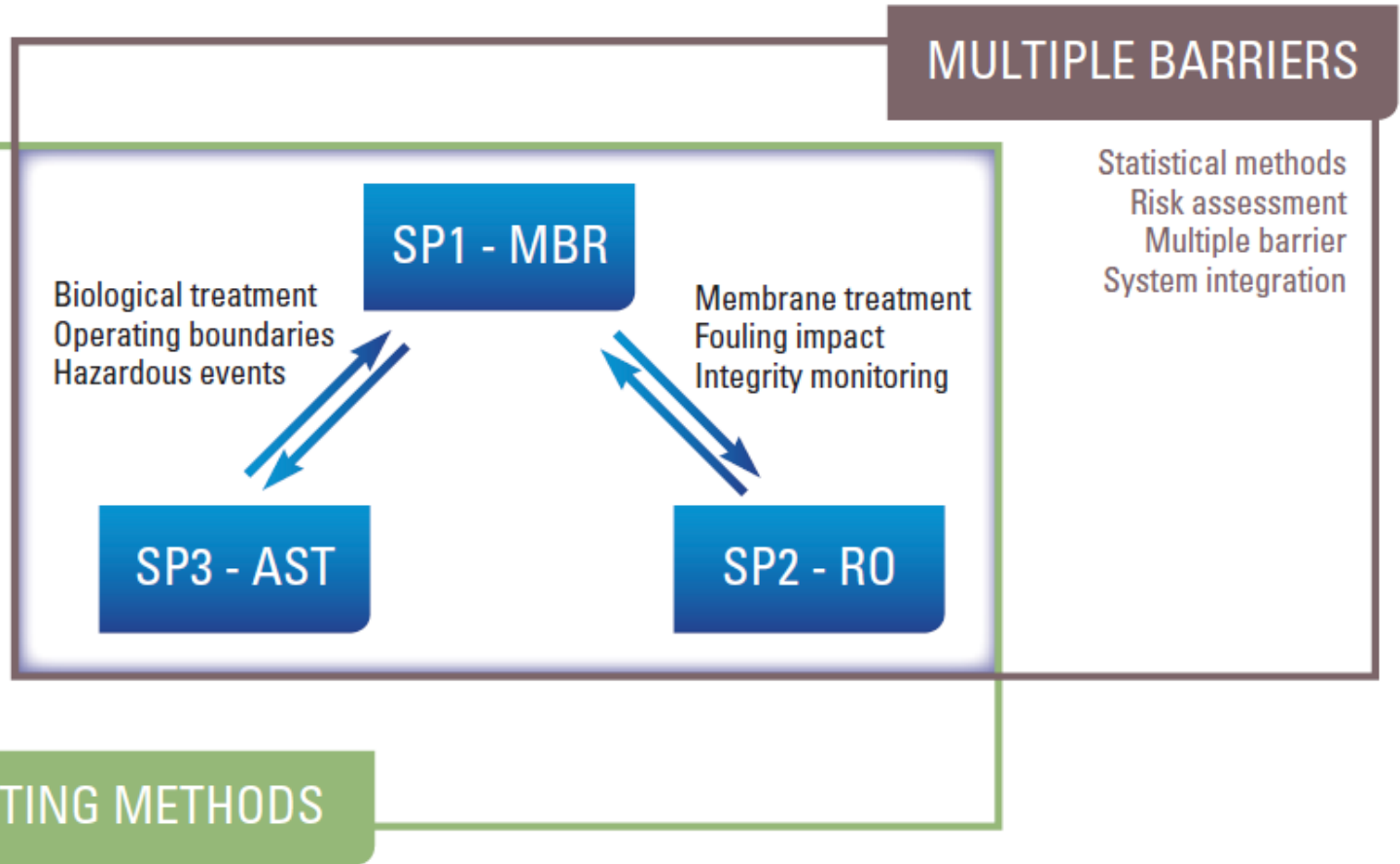
NatVal 2.2 Research Program

Program milestones

Each sub-project includes a specific set of milestones but these have been aligned at the program level in terms of content as follows:

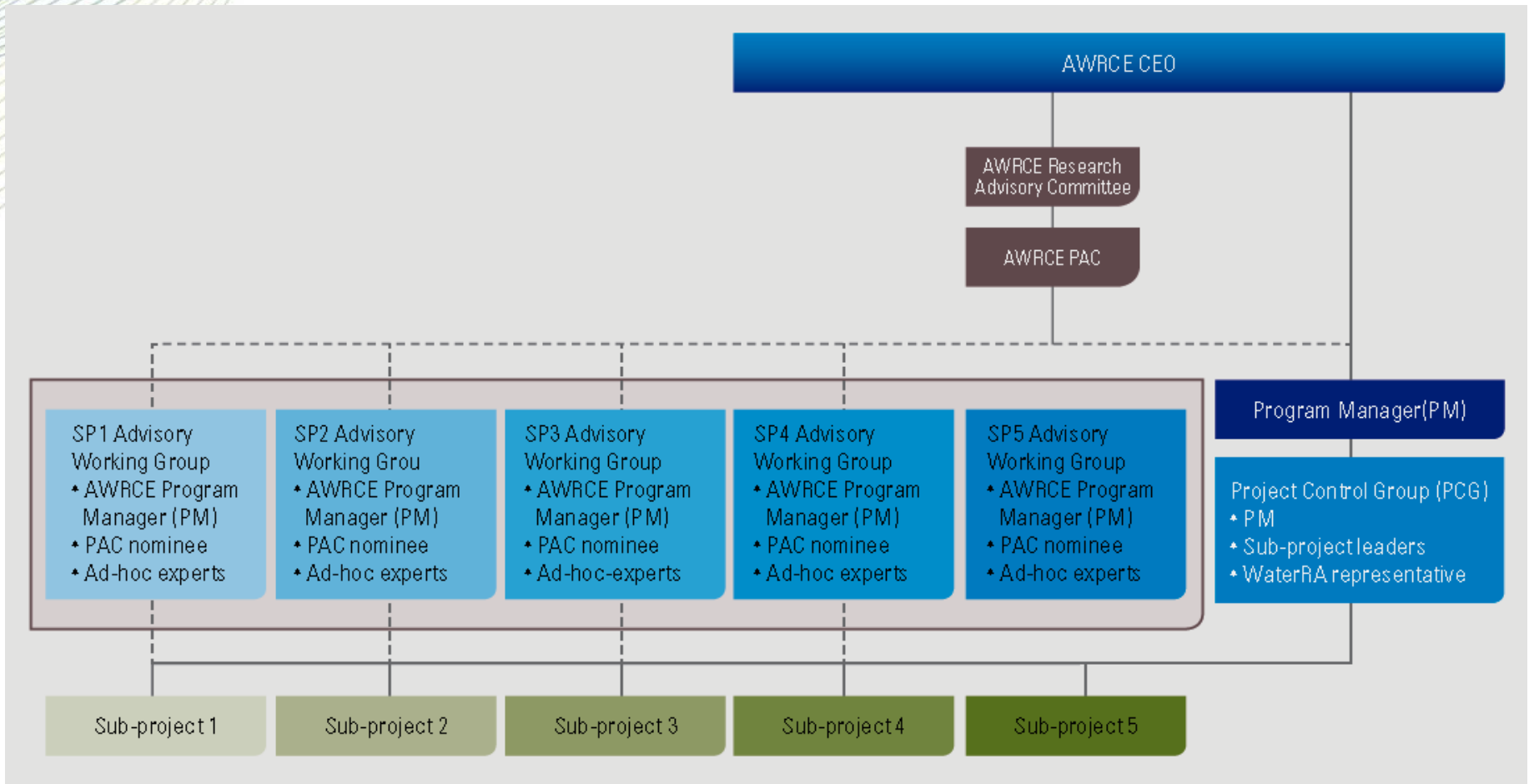
- | | |
|-------------------------|--|
| 28 February 2014 | Literature reviews, reports on industry data collection and preliminary drafts of validation protocols |
| 1 September 2014 | Interim reports on experimental research and case studies |
| 31 March 2015 | Final reports on research outcomes, draft validation protocols and methods |
| 30 June 2015 | Reports on protocol testing and final validation protocols |

NatVal 2.2 Research Program





NatVal 2.2 Research Program



NatVal 2.2 Research Program Team Leaders



P. Le-Clech
UNSW

SP1
(MBR)



M-L. Pype
UQ

SP2
(RO)



S. Toze
CSIRO

SP3
(AST)



S. Khan
UNSW

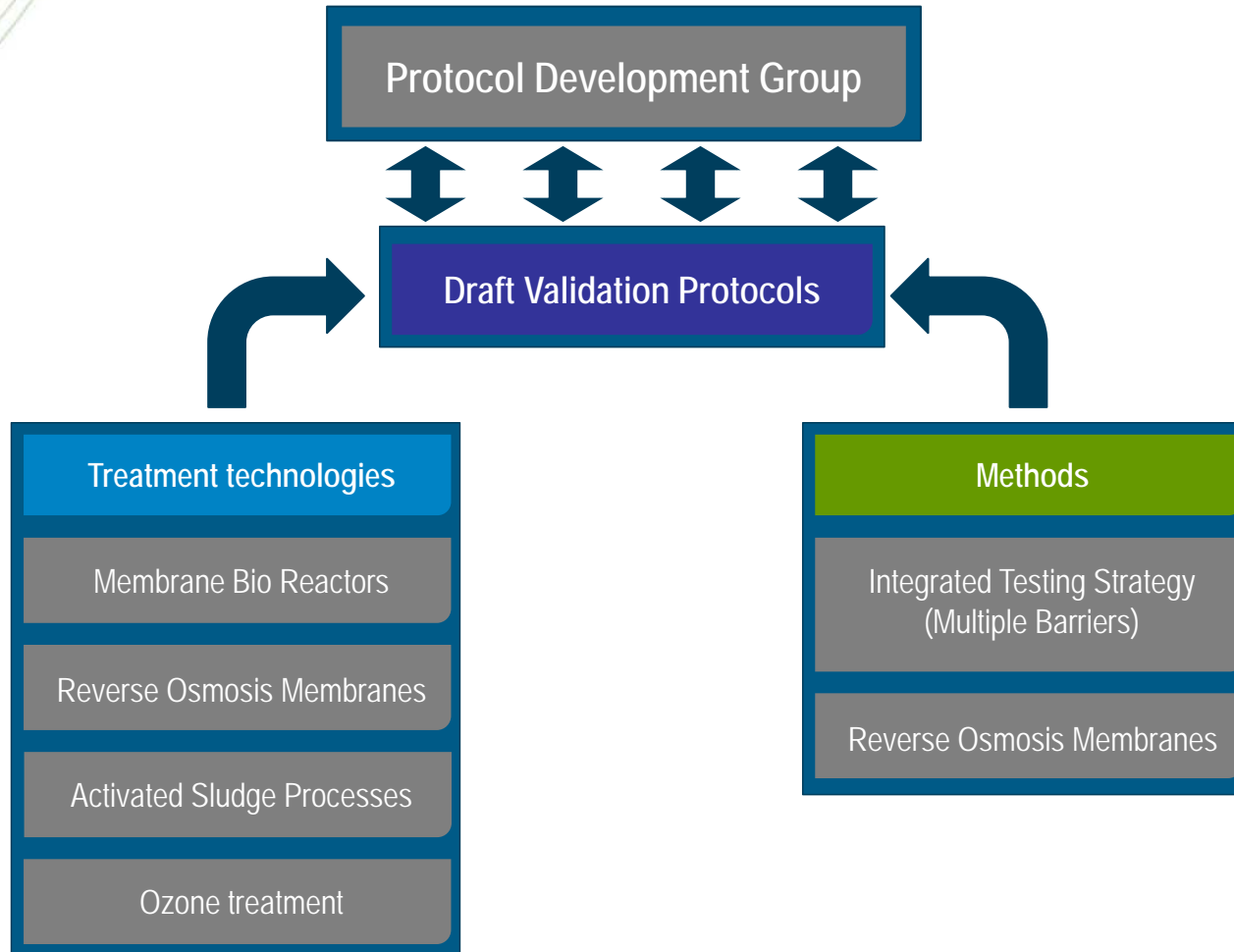
SP4
(Multiple
Barriers)



P. Monis
SA Water

SP5
(Testing
Methods)

Links NatVal 2.1 & NatVal 2.2



Australian Water Recycling
Centre of Excellence



Thank you

Presented by

Cédric Robillot

NatVal2.2 Program Manager



Australian Government
Water for the Future